

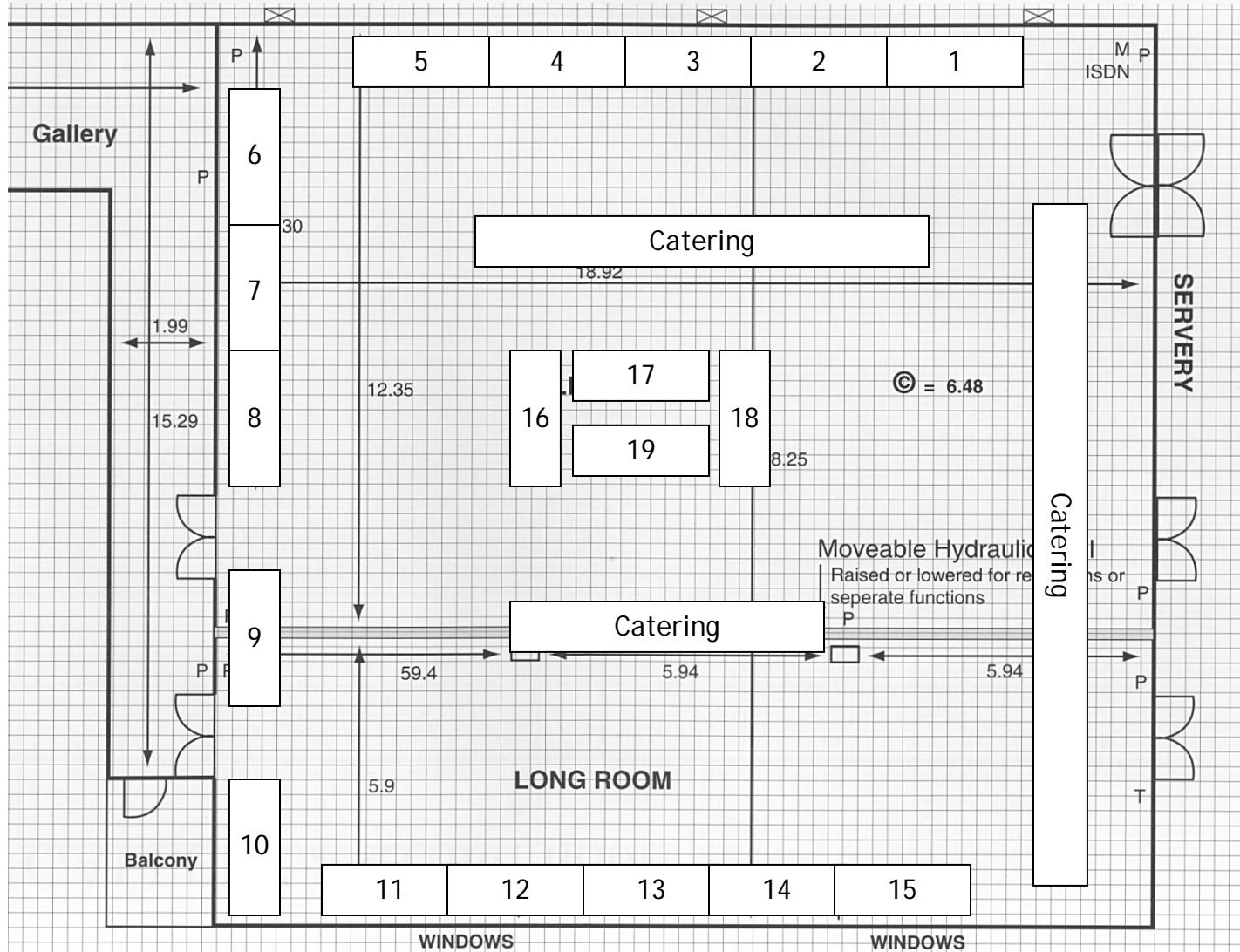
# OSLER ROOM & LONG ROOM – first floor

## Osler and Long

- 1 Pharmaterials
- 2 Aptiv Solutions
- 3 Solvias
- 4 SAFC
- 5 CARBOGEN AMCIS
- 6 Bachem
- 7 Biotec
- 8 Shasun
- 9 KWS
- 10 Almac
- 11 BASi
- 12 Solid Form Solutions
- 13 Aptuit
- 14 Covance
- 15 Hovione
- 16 High Q Solutions
- 17 Biotrial
- 18 Orion
- 19 RSSL

## Notes

Floor plan not to scale  
 Catering points are for  
 Location indication only



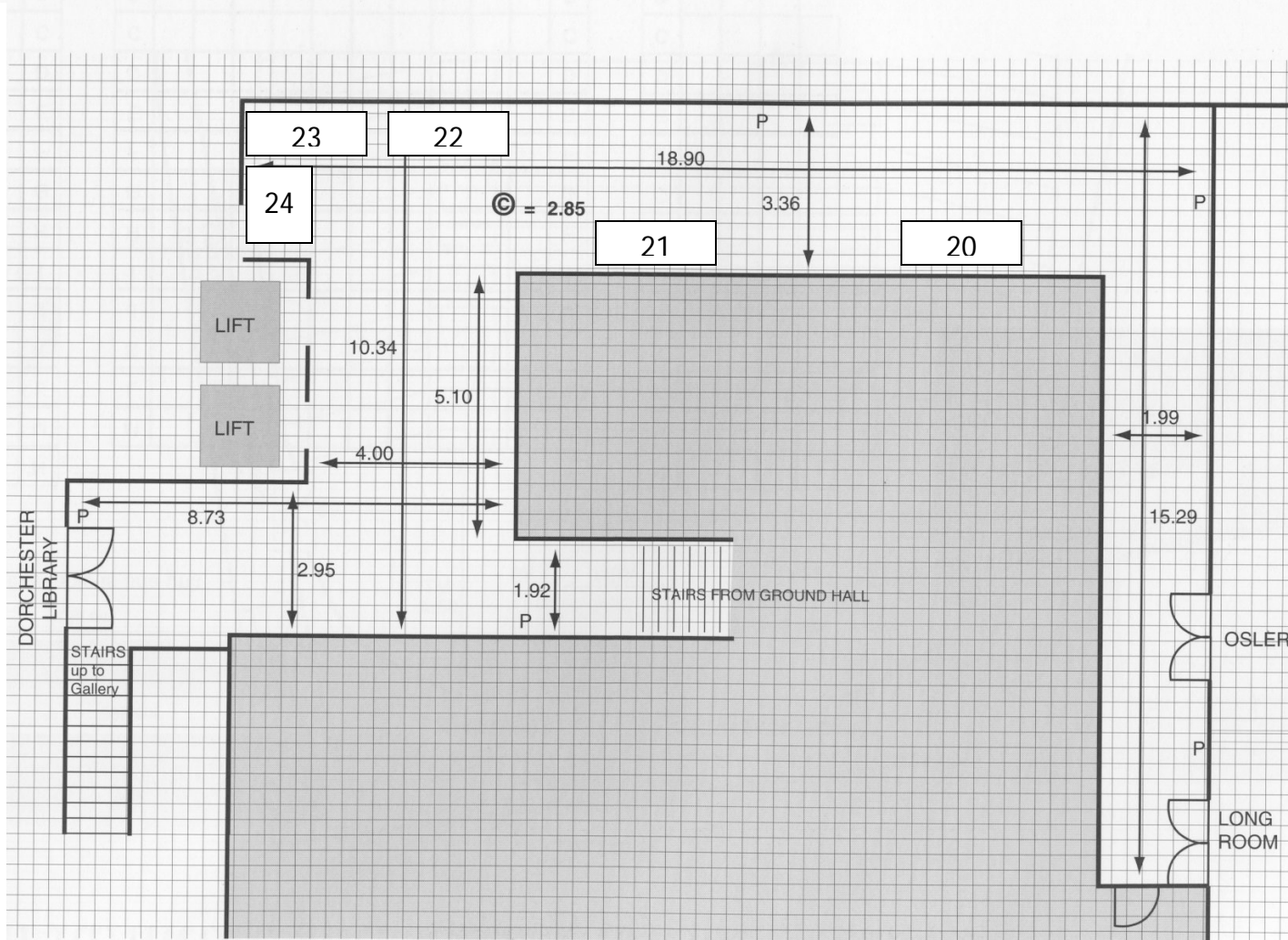
# GALLERY – first floor

**Gallery - first floor**  
(1 metre wide banner stands)

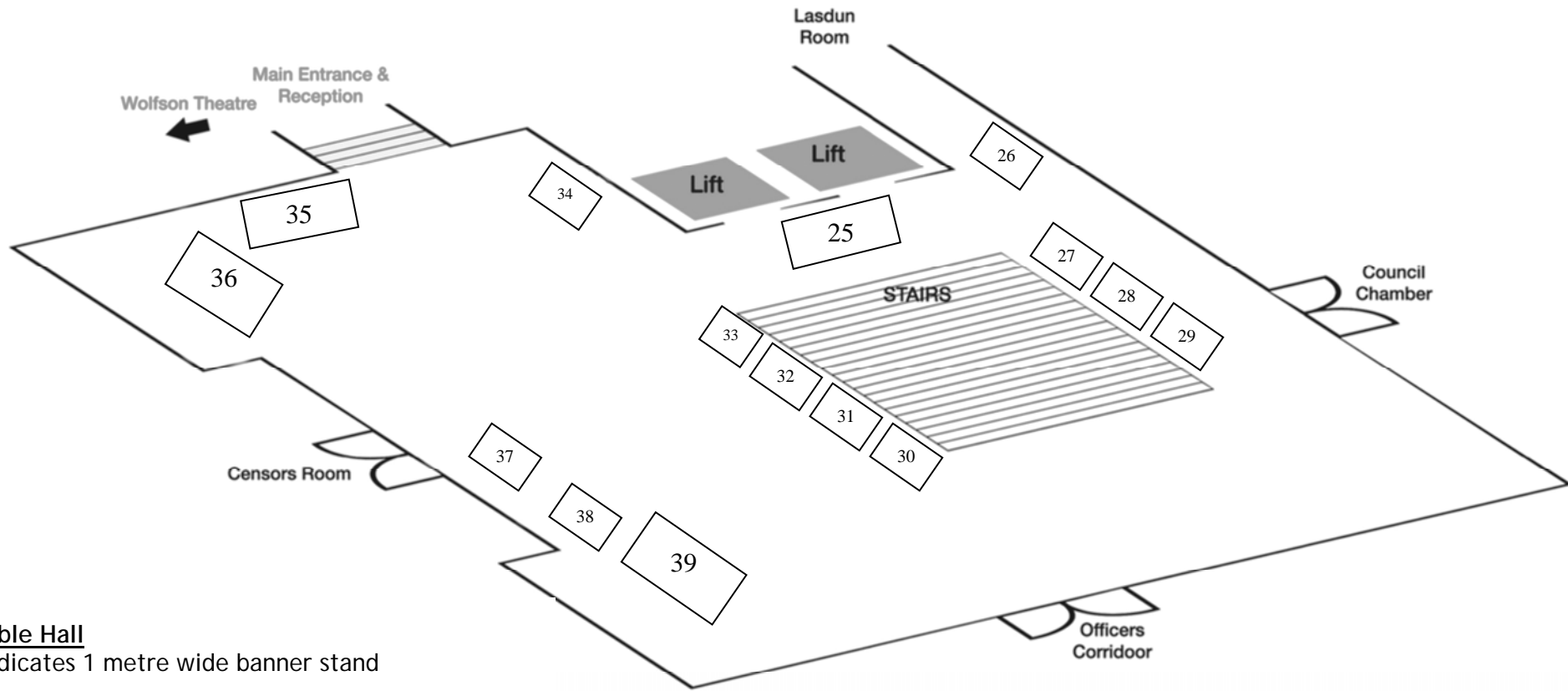
- 20 LBIC
- 21 Chemoswed
- 22 SCM Pharma
- 23 Aspect
- 24 Beckham Coulter

**Notes**

Floor plan and stands are not to scale



# MARBLE HALL - GROUND FLOOR



**Marble Hall**

B indicates 1 metre wide banner stand

- |        |        |
|--------|--------|
| 25     | 33 (B) |
| 26 (B) | 34 (B) |
| 27 (B) | 35     |
| 28 (B) | 36     |
| 29 (B) | 37 (B) |
| 30 (B) | 38 (B) |
| 31 (B) | 39     |
| 32 (B) |        |

**Note** - Floor plan and stands are not to scale

**Note for Exhibitors**

Although Bio2Business will do their best to allocate the stand selected, please be aware that stand positions may vary whilst liaising with the conference department at the Royal College of Physicians.